

Govt. Of Assam
Office of the Chief Engineer :: Irrigation Department :: Assam :: Chandmari :: Guwahati-3
(Mechanical Branch)

Memo No. CEI(Mech) 9 / 2019 / 20


Dated Guwahati the 21th May, 2024

ADDENDUM

The Addendum are made for the SoR (Mechanical Works) for the year 2023-24 for Part-II (LIS) from this end which may be read as follows :

Sl. No.	Item	Unit	Rate/ Unit (in Rs)
2.24	<p>Supply, fabrication, launching & commissioning of M.S. Floating Barge of size: 4.57 m x 3.81 m x 1.37 m at site made up of best quality M.S. Plates of 6 mm thick, M.S. Angles ISA6565 and MS Black pipe of 40 mm dia. having relevant IS specification complete as directed and as per drawing.</p> <p>The Bottom Plate, Side Plate and Deck Plate of the Barge is to be fabricated by M.S. Plate of thickness 6 mm. The bottom stiffener, hull stiffener, deck post, shed post, tie in the middle of the entire water cut portion of the barge is to be made up of M.S. Angles of size: 65 mm x 65 mm x 6 mm. The Deck Frame, Deck Post, Tie (Lateral) is to be made up of M.S Angle of size: 65 mm x 65 mm x 6 mm. The Principal Rafter, Suspender (Kingpost), Queen Post and Purlin of roof truss of the Barge is to be made of H.D. M.S Black Pipe of size: 40 mm nominal dia. of thickness, 4.05 mm.</p> <p>The railing of the Barge in two rows is to be provided by using M.S.Pipe of size 40 mm dia. & a ladder of length 1.5 metre for manhole is to be made using M.S.Pipe of size 25 mm dia. M.S.Ballard as well as Manhole is to be provided as directed & as per drawing.</p> <p>ISI approved Roofing sheet & Ridging with high grade aluminium zinc colour coated (PPGL) of thickness 0.5 mm as per IS:19565(2012) is to be used.</p> <p>Painting : The job also includes painting of all the metallic surfaces of Barge (both inside & outside) by applying anticorrosive Metal Primer to be followed by 2 (two) coats of synthetic enamel metallic paints. The dust, dirt, oil or any other foreign materials should be removed from the surfaces to be painted before applying the paints. Each subsequent coat of paint should be applied after normal air drying of previous coat.</p> <p>All the joints should be perfectly leak proof with continuous arc welding maintaining the proper beads using M.S. Electrode of relevant IS gauge & specification. No cracks or holes should be found in the welding beads. The beads should have uniform waves, width and height. The finished product should satisfy the designed dimensions and have almost no distortion.</p> <p>Approximate weight of the Barge : 5.50 MT (Approx.)</p> <p>Note : 1. Any fencing of wire mesh (if required) to be measured as extra.</p> <p style="padding-left: 40px;">2. All anchoring arrangements to be measured as extra.</p> <p style="padding-left: 40px;">3. Rain protection shed (if required) to be measured as extra.</p> <p style="padding-left: 40px;">4. Ladder for boarding from bank to Barge to be measured as extra.</p> <p>*Drawings are indicative only.</p>	Job	15,40,467.00 (Rupees fifteen lakh forty thousand four hundred sixty seven) only

APPROVED BY:

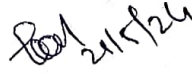

 Chief Engineer
 Irrigation Deptt.
 Assam, Chandmari, Guwahati-03

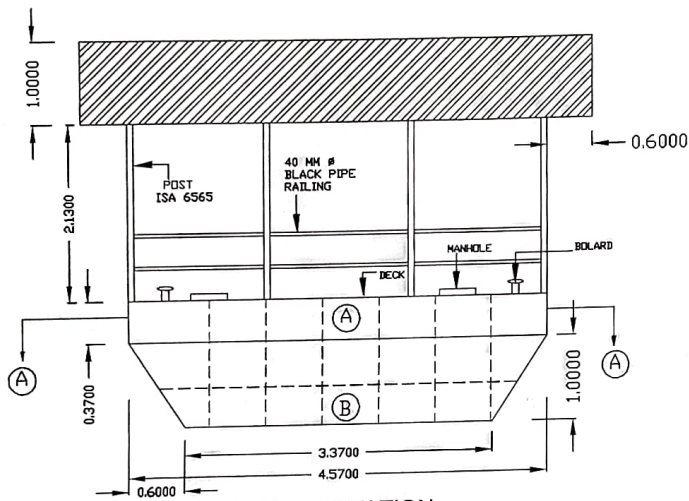
Addl. Chief Engineer (Mech.)
 Irrigation Department Assam
 Chandmari, Guwahati-781003

2.25	<p>Supply, fabrication, launching & commissioning of M.S. Floating Barge of size: 7.62 m x 4.57 m x 1.37 m at site made up of best quality M.S. Plates of 6 mm thick, M.S. Angles ISA6565 and MS Black pipe of 40 mm dia. having relevant IS specification complete as directed and as per drawing.</p> <p>The Bottom Plate, Side Plate and Deck Plate of the Barge is to be fabricated by M.S. Plate of thickness 6 mm. The bottom stiffener, hull stiffener, deck post, shed post, tie in the middle of the entire water cut portion of the barge is to be made up of M.S. Angles of size: 65 mm x 65 mm x 6 mm. The Deck Frame, Deck Post, Tie (Lateral) is to be made up of M.S Angle of size: 65 mm x 65 mm x 6 mm. The Principal Rafter, Suspender (Kingpost), Queen Post and Purlin of roof truss of the Barge is to be made of H.D. M.S Black Pipe of size: 40 mm nominal dia. of thickness, 4.05 mm.</p> <p>The railing of the Barge in two rows is to be provided by using M.S.Pipe of size 40 mm dia. & a ladder of length 1.5 metre for manhole is to be made using M.S.Pipe of size 25 mm dia. M.S.Ballard as well as Manhole is to be provided as directed & as per drawing.</p> <p>ISI approved Roofing sheet & Ridging with high grade aluminium zinc colour coated (PPGL) of thickness 0.5 mm as per IS:19565(2012) is to be used.</p> <p>Painting : The job also includes painting of all the metallic surfaces of Barge (both inside & outside) by applying anticorrosive Metal Primer to be followed by 2 (two) coats of synthetic enamel metallic paints. The dust, dirt, oil or any other foreign materials should be removed from the surfaces to be painted before applying the paints. Each subsequent coat of paint should be applied after normal air drying of previous coat.</p> <p>All the joints should be perfectly leak proof with continuous arc welding maintaining the proper beads using M.S. Electrode of relevant IS gauge & specification. No cracks or holes should be found in the welding beads. The beads should have uniform waves, width and height. The finished product should satisfy the designed dimensions and have almost no distortion.</p> <p>Approximate weight of the Barge : 8.70 MT (Approx.)</p> <p>Note : 1. Any fencing of wire mesh (if required) to be measured as extra.</p> <p>2. All anchoring arrangements to be measured as extra.</p> <p>3. Rain protection shed (if required) to be measured as extra.</p> <p>4. Ladder for boarding from bank to Barge to be measured as extra.</p> <p>*Drawings are indicative only.</p>	Job	25,80,769.30 (Rupees twenty five lakh eighty thousand seven hundred sixty nine & paise thirty) only
------	--	-----	--

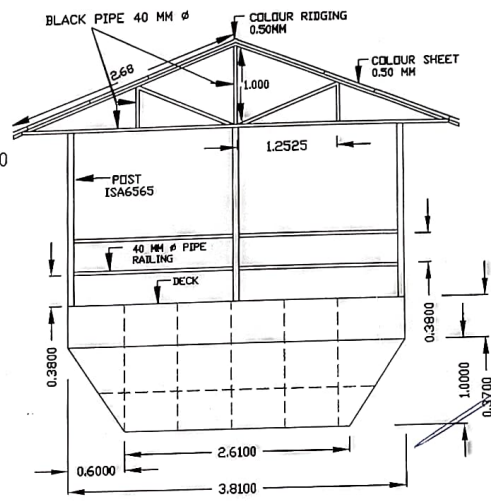
APPROVED BY:-


 Chief Engineer
 Irrigation Deptt.
 Assam, Chandmari, Guwahati-0:

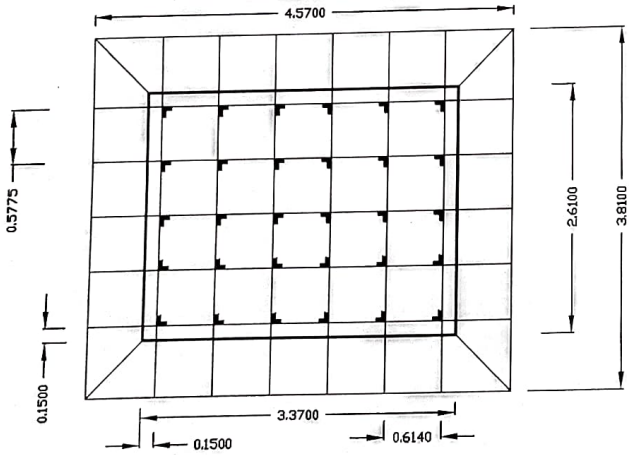

 Additional Chief Engineer (Mechanical)
 Irrigation Department, Assam
 Chandmari, Guwahati-3



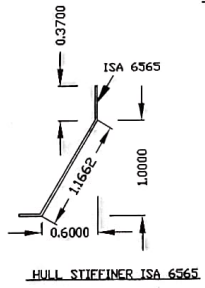
FRONT ELEVATION




SIDE ELEVATION




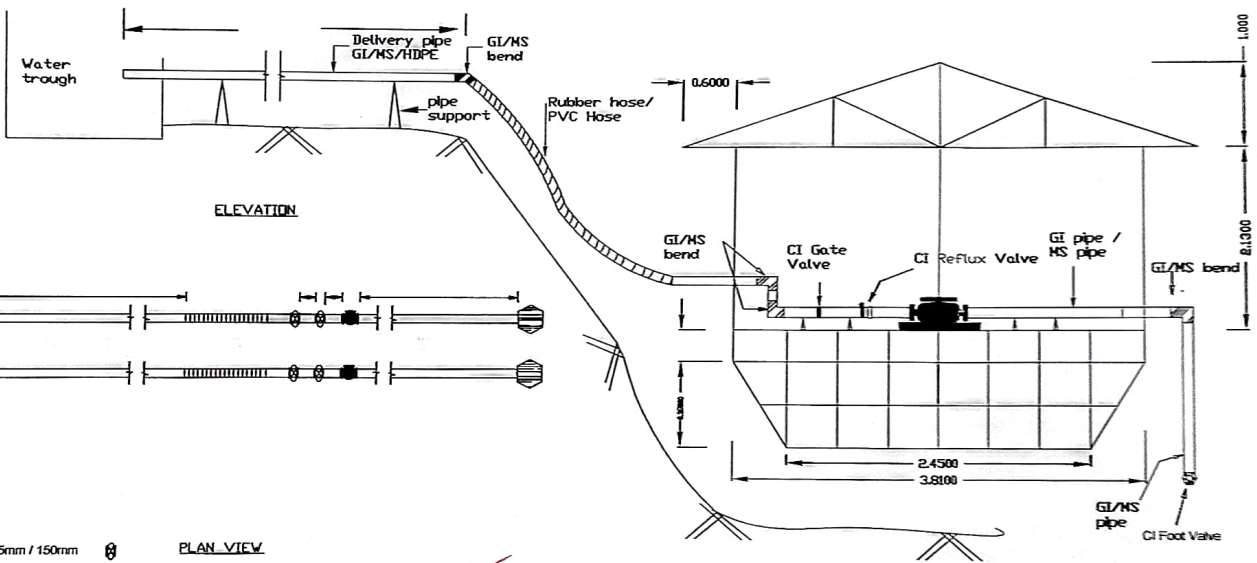
SECTION VIEW AT AA



HULL STIFFENER ISA 6565


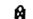



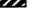
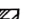

APPROVED BY :-

 Chief Engineer
 Irrigation Deptt.
 Assam, Chandmari, Guwahati-03


O/o The Additional Chief Engineer (Mechanical) Irrigation , Assam Guwahati - 03	
NAME :- Drawing of Steel Floating Barge of size 4.57 m x 3.81 m x 1.37 m	
----- LIS.	
Drawing details :-	FRONT VIEW, SIDE VIEW, SECTION VIEW AT AA
Drawn by :-	KALFAILIEN VANKAL Sub Engg.gr (I)
Check by :-	Approved by :-
 Additional Chief Engineer (Mech.) Irrigation Deptt. Assam Chandmari, Guwahati-03	
NOTE :- DRAWING IS NOT TO THE SCALE, ALL DIMENSIONS ARE IN METRE.	

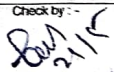


ELEVATION

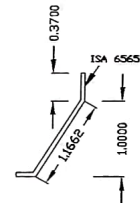
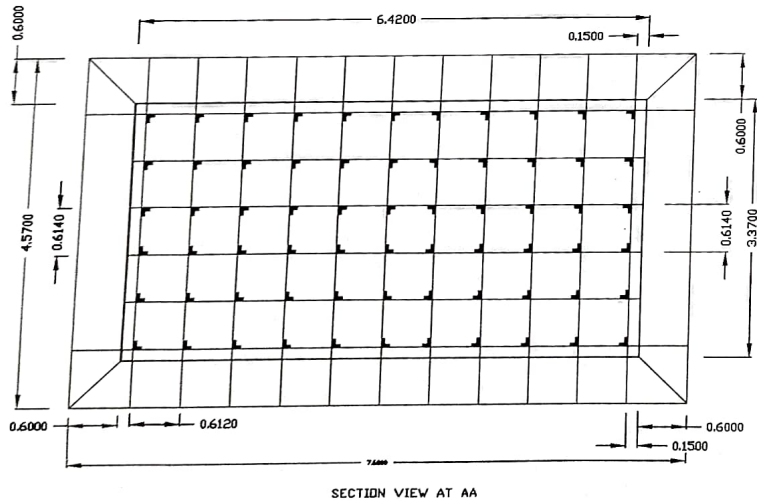
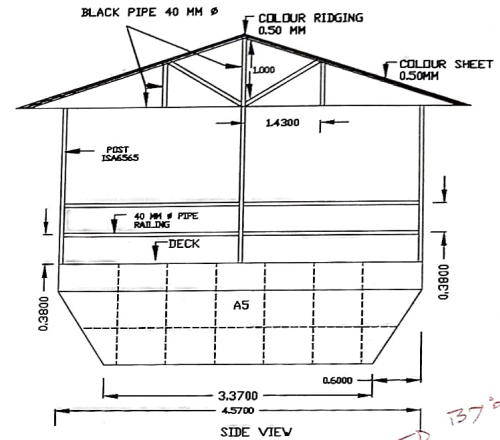
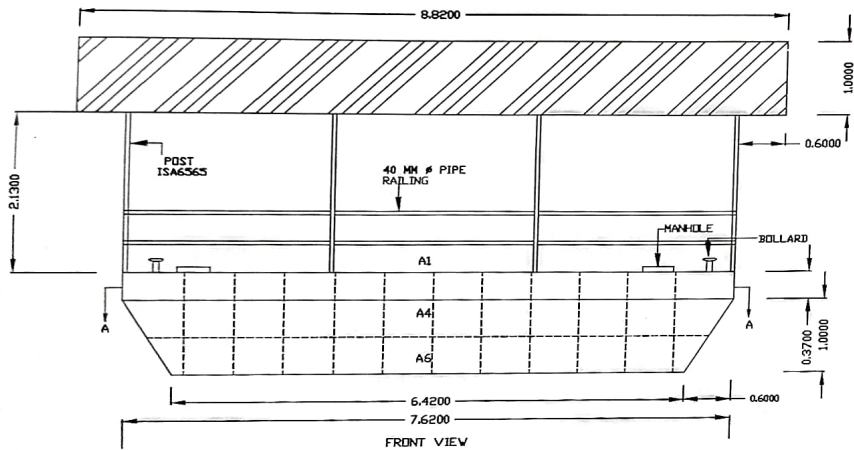
PLAN VIEW

- Reflux Valve 125mm / 150mm 
- Sluice Valve 125mm/150mm 
- Pump Set 
- Foot Valve 150 mm 
- HDPE bend 
- GI Bend 45/90 degree 
- Pipe Support 
- Rubber hose / PVC Hose 

APPROVED BY :-

 Chief Engineer
 Irrigation Dept.
 Assam, Chandmari, Guwahati-781003

O/o The Additional Chief Engineer (Mechanical) Irrigation , Assam Guwahati - 03	
NAME :- DRAWING OF LAYOUT DIAGRAM OF BARGE & PIPE ----- LIS	
Drawing details :-	PLAN VIEW, ELEVATION
Drawn by :-	KALFAILEN VANKAL Sub Engg or /i
Check by :-  21/5	Approved by :-
NOTE :- DRAWING IS NOT TO THE SCALE AND DIMENSIONS ARE IN METRE	

Chief Engineer (Mech.)
 Irrigation Department Assam
 Chandmari, Guwahati-781003



APPROVED 1378

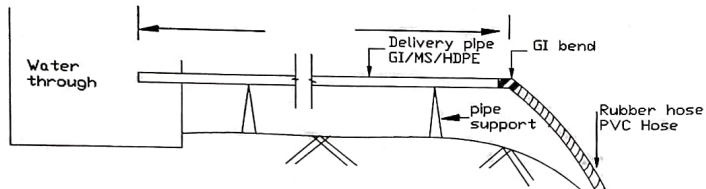
Chief Engineer
Irrigation Deptt.
Assam, Chandmari, Guwahati-02

HULL STIFFENER ISA 6565

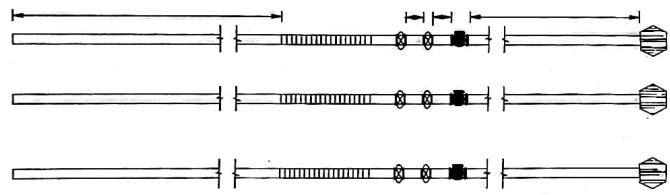
O/o The Additional Chief Engineer (Mechanical) Irrigation , Assam Guwahati - 03 NAME :- Drawing of Steel Floating Barge of size 7.62MX4.57MX1.37M LIS.	
Drawing details :-	FRONT VIEW , SIDE VIEW, SECTION VIEW AT AA
Drawn by :-	KALFALIEN VANKAL Sub Engg.gr (I)
Check by :- <i>BM</i>	Approved by :-

Addl. Chief Engineer (Mech.)
Irrigation Department Assam
Chandmari, Guwahati

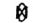






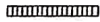
NOTE :- DRAWING IS NOT TO THE SCALE.
ALL DIMENSIONS ARE IN METRE.

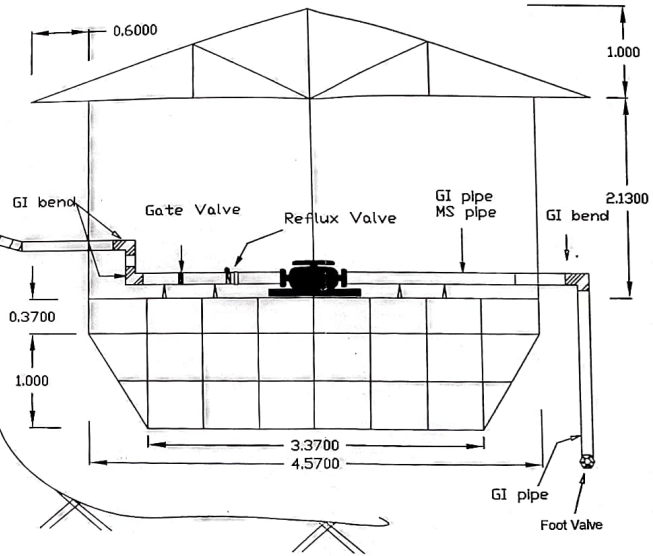


ELEVATION



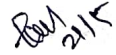
PLAN VIEW

- Reflex Valve 125mm / 150mm 
- Sluice Valve 125mm/150mm 
- Pump Set 
- Foot Valve 150 mm 
- HDPE bend 
- GI Bend 45/90 degree 
- Pipe Support 
- Rubber hose / PVC Hose 



APPROVED BY :-


 Chief Engineer
 Irrigation Dept.
 Assam, Chandmani, Guwahati-03

O/o The Additional Chief Engineer (Mechanical) Irrigation, Assam Guwahati - 03	
NAME :- DRAWING OF LAYOUT DIAGRAM OF BARGE & PIPE - - - - - LIS.	
Drawing details :-	PLAN VIEW, ELEVATION,
Drawn by :-	KALFALIEN VANKAL Sub Engg.gr (I)
Check by :-	Approved by :-
 21/5	
Add. Note: - DRAWING IS NOT TO THE SCALE, ALL DIMENSIONS ARE IN METRE. Additional Engineer (Mech.) Irrigation Dept., Assam Chandmani, Guwahati	